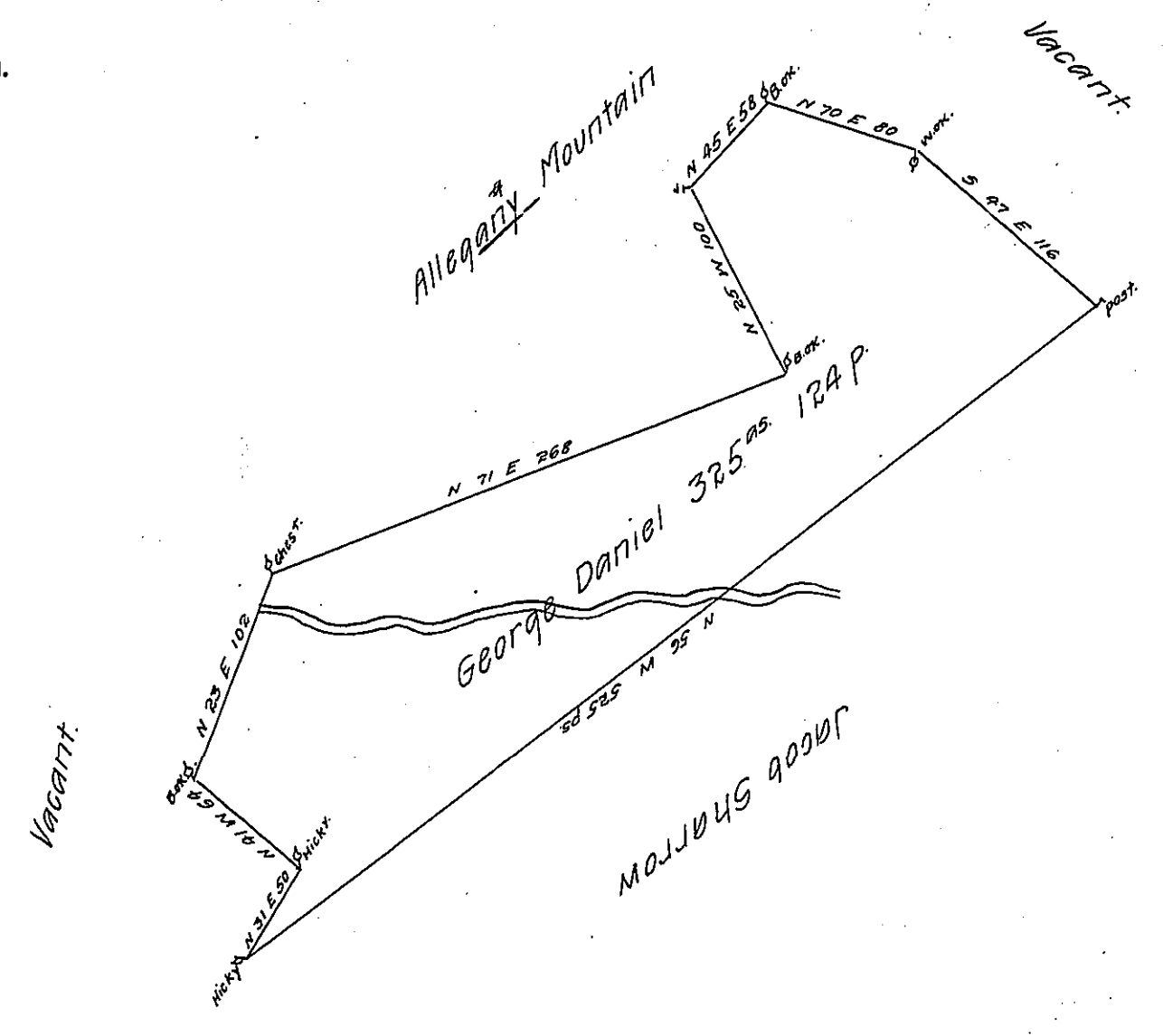


FORM NO 1.



A Draught of Tract of land Situate near the Allegheny Mountain and about two miles from the Bald Eagle Creek in Bedford County containing Three hundred & Twenty Five acres - & the usual allowance of six p. Ct. for roads &c. Surveyed the 12th of Nov^r 1785 in pursuance of a warrant Dated the 9th of March 1785.

George Woods D.S.

John Lukens Esqr. S.G.

IN TESTIMONY that the above is a copy of the original remaining on file in the Department of Internal Affairs of Pennsylvania, made conformably to an Act of Assembly approved the 16th day of February, 1833, I have hereunto set my Hand and caused the Seal of said Department to be affixed at Harrisburg, this twenty-second day of November 1907.

Henry Howard
Secretary of Internal Affairs.